

# Cones & Cups

## Cone or Cup - Chocolate, vanilla or twist

Tiny Tot .....	0.95
Small .....	1.35
Medium .....	1.85
Large .....	2.10

## Dip, Crunch or Sprinkle Cone

Chocolate, butterschotch or cherry dip

Small .....	1.70
Medium .....	2.10
Large .....	2.45

## Specialty Flavored Cone or Cup

Small .....	1.60
Medium .....	1.95
Large .....	2.25

## Specialty Ice Cream Flavors

Amaretto • Apple Pie • Banana • Black Cherry  
 Black Raspberry • Black Walnut • Blueberry  
 Butter Pecan • Caramel • Cheesecake  
 Cinnamon • Coconut • Cotton Candy  
 Creme de Menthe • Espresso  
 German Chocolate • Kahlua • Lemon  
 Lime • Mango • Orange • Peach • Peppermint  
 Pina Colada • Pistachio • Pumpkin Pie • Strawberry  
 Tutti Frutti

## Home Pack - Chocolate, vanilla or twist

Pints .....	1.90
Quarts .....	3.55
Half- Gallon .....	6.25

## Specialty Flavored Home Pack

Pints .....	2.55
Quarts .....	4.20

# Sandwiches & Snacks

## Sandwiches

Bar-B-Q .....	2.50
Charburger .....	2.10
Chili Dog .....	2.50
Corn Dog .....	1.20
Dairy Burger .....	2.30
Hot Ham & Cheese .....	2.30
Hot Dog .....	1.30
Polish Sausage .....	2.50

Chips .....

## Nachos

Cheese .....	3.75
Meat and Cheese .....	4.75

## *A Fairfield tradition since 1950*

The Dairy Bar was originally a Dairy Queen, opening in 1950. In the 1960's the franchise was dropped and it became the Dairy Bar as we know it!



## Ice Cream Parlor & Sandwich Shop

641 - 472 - 2417

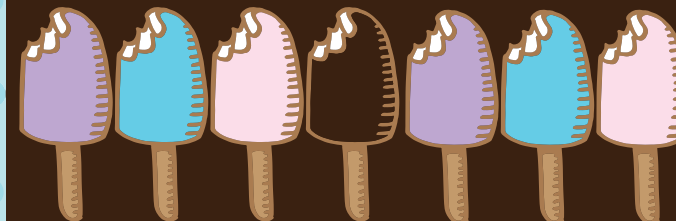
Call & order in advance & have your order ready to pick up!

## Hours:

Monday - Saturday: 11 am - 9 p.m.

Sunday: Noon - 9 p.m.

1002 W. Burlington Ave.  
 Across from Fairfield Tire and Service



# Wizzards

## Wizzards

Small.....	3.15
Medium.....	3.90
Large.....	4.95
X-Large.....	6.45

## Wizzard Toppings

- Apple Crisp
- Baby Ruth
- Banana Pudding
- Butterfinger
- Cheesecake
- Cookie Dough
- Fruit (banana, strawberry, pineapple)
- Fudge Bites
- German Chocolate
- Heath
- Kit Kat
- M&M's
- Malted Milk Ball
- Nestle Crunch
- Oreo
- Oreo Mint
- Reese's Peanut Butter Cup
- Reese's Pieces
- Snickers
- Strawberry Crunch
- Tropical (coconut, pecans, pineapple)
- Turtle
- Twix



# Sundaes, Shakes, Malts & Splits

## Sundaes

Tiny Tot.....	1.25
Small.....	2.05
Medium.....	2.65
Large.....	3.15

## Shakes

Small.....	2.15
Medium.....	2.70
Large.....	3.55
X-Large.....	4.60

## Malts

Small.....	2.45
Medium.....	3.00
Large.....	3.80
X-Large.....	5.00

## Sundae, Shake & Malt Toppings

- Black Raspberry • Blueberry • Butterscotch  
 Butter Pecan • Cherry • Cold Caramel  
 Chocolate Syrup • Hot Apple • Hot Caramel  
 Hot Fudge • Jack & Jill • Marshmallow • Peach  
 Peanut Butter • Pineapple • Red  
 Raspberry • Strawberry • Turtle • Butter Pecan

## Specialty Sundaes

Fudge Brownie Sundae...	3.85
Strawberry Shortcake.....	3.85
Fruit Parfait.....	3.55
Peanut Parfait.....	3.55

## Banana Splits

Small.....	3.95
Large.....	4.60

# Bars, Pop & Slush

## Dairy Bars

0.95 each or 9.50 per dozen

## Dairy Bar Flavors

- Blue Raspberry • Bubble Gum • Butterscotch  
 Cherry • Chocolate • Double Chocolate  
 Strawberry • Toasted Coconut

## Ice Cream Sandwich

0.95 each or 9.50 per dozen

Chocolate Bananas .....1.00

Drum Sticks & Fudge Nut Bars.....1.55

## Freezes, Whips & Floats

Small.....	2.00
Medium.....	2.30
Large.....	3.15
X-Large.....	4.25

## Pop & Slush

Small.....	0.95
Medium.....	1.30
Large.....	1.75
X-Large.....	2.25

Bottled Water .....0.85

## Slush and Whip Flavors

- Blue Raspberry • Cherry • Grape • Lemon  
 Lime • Orange • Red • Raspberry • Strawberry

## Pop, Freeze and Float Flavors

- Diet Pepsi • Mt. Dew • Pepsi • Root Beer • Sierra Mist